



**1 Bed
Apartment
located in Clapham**

£1,600 PCM

ORLANDO REID



 **ORLANDO REID**
LONDON



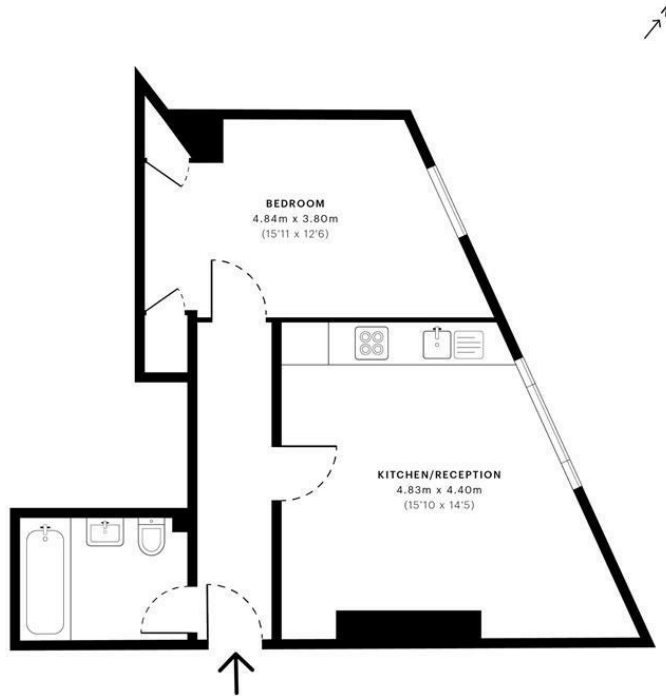
Voltaire Road, SW4

CAPTURE DATE: 07/01/2022 LASER SCAN POINTS: 911,132

GROSS INTERNAL AREA

39.12 sqm / 421.08 sqft

DIRECTIONS



— Fourth Floor

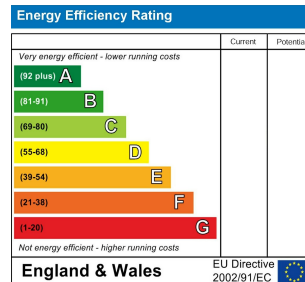
GROSS INTERNAL AREA (GIA) The footprint of the property 39.12 sqm / 421.08 sqft	NET INTERNAL AREA (NIA) Excludes walls and structural features Includes windows, restricted head height 37.12 sqm / 399.56 sqft	EXTERNAL STRUCTURAL FEATURES Balconies, terraces, verandas etc. 0.00 sqm / 0.00 sqft	RESTRICTED HEAD HEIGHT Limited use area under 1.8m 0.00 sqm / 0.00 sqft
--	---	---	--



Spec Verified floor plans are produced in accordance with Royal Institution of Chartered Surveyors' Property Measurement Standards. Plots and gardens are illustrative only and excluded from all area calculations. Due to rounding, numbers may not add up precisely. All measurements shown for the individual room lengths and widths are the maximum points of measurements captured in the scan.

IPW 38 RESIDENTIAL: 38.51 sqm / 414.52 sqft
IPW 30 RESIDENTIAL: 37.25 sqm / 401.28 sqft

spec id: 61d6cc7ada11930e1d46ead



CONTACT

1-3 Old Town
Clapham
London
SW4 0JT

E: lettings@orlandoreid.co.uk
T: 020 7627 3197
www.orlandoreid.co.uk